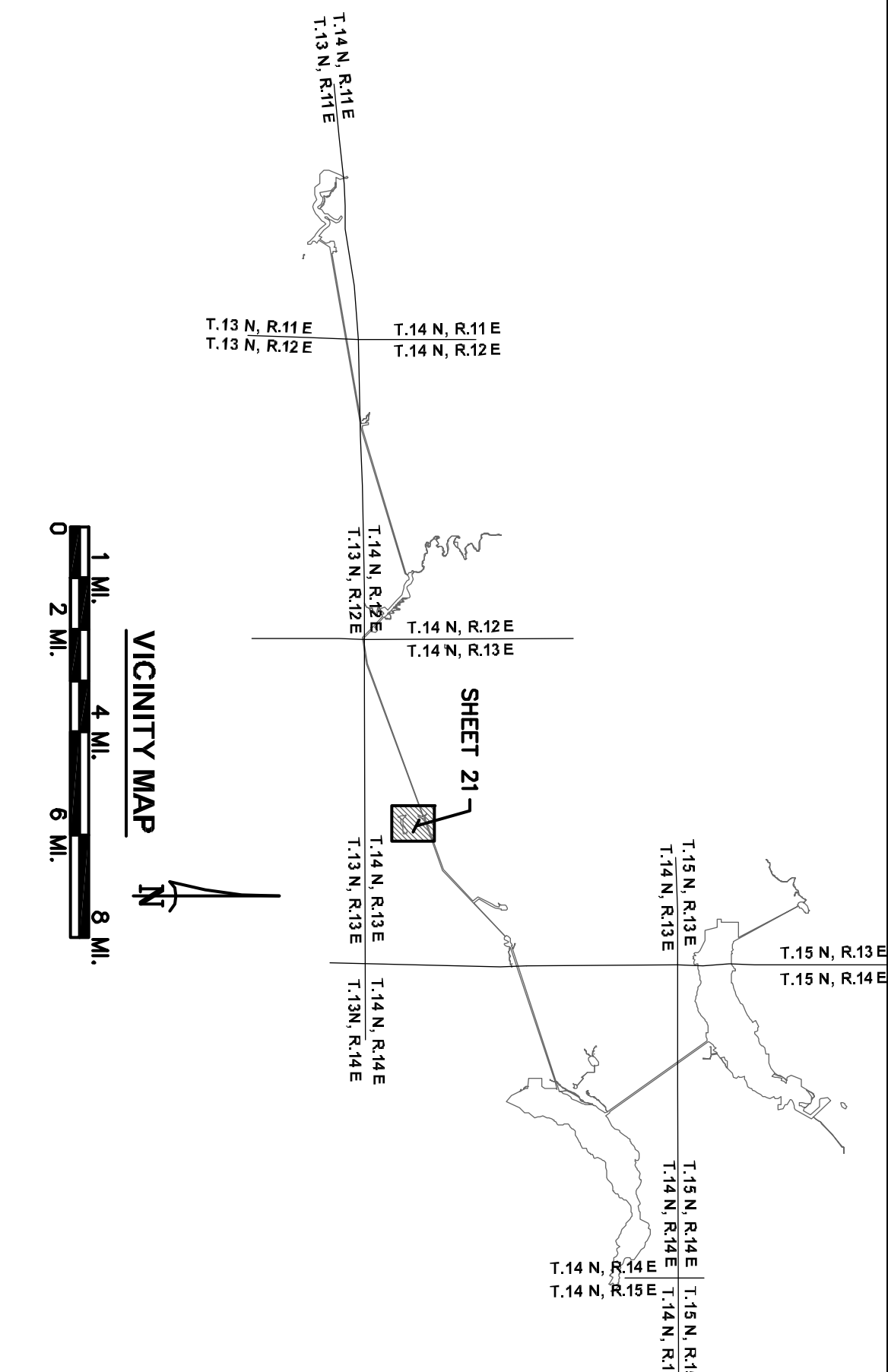
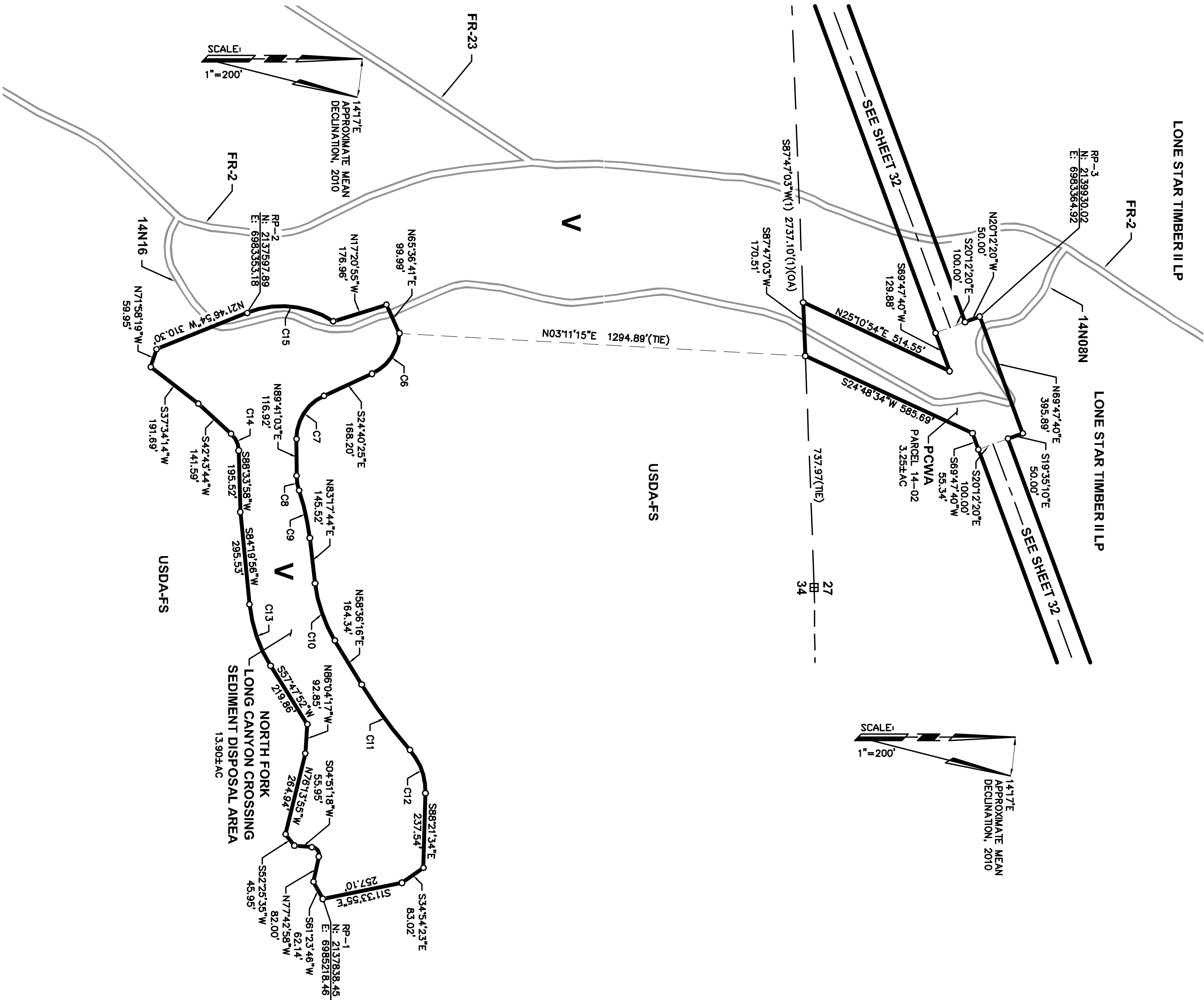


CURVE TABULATION

NO.	RADIUS	DELTA	LENGTH	BEARING	DIST
C6	150.00	62°30'33"	163.65'	N55°55'41"W	155.65'
C7	150.00	65°38'32"	171.85'	S57°29'41"E	162.61'
C8	150.00	18°15'19"	47.79'	N80°33'24"E	47.69'
C9	150.00	21°52'28"	55.33'	S70°57'05"E	55.08'
C10	1500.00	24°42'28"	183.33'	N70°57'05"E	183.44'
C11	1500.00	9°52'48"	258.67'	N53°38'51"E	258.35'
C12	200.00	42°55'00"	149.81'	S70°10'56"W	146.33'
C13	25.00	97°25'44"	42.51'	S53°34'10"W	37.57'
C14	450.00	26°32'05"	208.40'	N71°03'54"E	208.54'
C15	75.00	45°50'14"	60.00'	S65°38'51"W	58.41'



LEGEND

- PROJECT BOUNDARY
- RESERVOIR STORAGE STAGE
- TUNNEL (WITH SHAFT)
- SECTION LINE, ESTABLISHED
- SECTION LINE, PROTRACTED
- SUBDIVISION LINE, GOVERNMENT LAND SURVEY
- SECTION CORNER, FOUND
- SECTION CORNER, RECORD
- 1/4 CORNER, FOUND
- 1/4 CORNER, RECORD
- COUNTY LINE
- U.S. FOREST BOUNDARY
- PROJECT BOUNDARY CORNER
- OVERALL DIMENSION
- REFERENCE POINT
- PUBLIC LAND
- ROAD
- BRIDGE
- RIVER OR PERENNIAL STREAM
- INTERMITTENT STREAM
- SPRING
- POND OR LAKE, WATER LEVEL, JULY 1961
- TREES OR BRUSH
- STREAM FLOW GAGING STATION
- WATER SURFACE GAGING STATION
- CAMPGROUND
- BUILDING
- GOVERNMENT BENCH MARK
- BENCH MARK RELOCATION
- PHOTOGRAMMETRIC PRINCIPAL POINT
- PHOTOGRAMMETRIC ELEVATION
- PHOTOGRAMMETRIC ELEVATION
- MINERAL RIGHTS ONLY
- RECORD PER 2 ROS 78

SURVEYORS STATEMENT

I CERTIFY THAT I SUPERVISED THE SURVEY OF THE PROJECT LANDS THAT THE PROJECT BOUNDARY DELINEATION FOR THE MIDDLE FORK AMERICAN RIVER PROJECT AS SHOWN ON THIS EXHIBIT "G" IS DEVELOPED WITHIN REASONABLE ACCURACIES AS REQUIRED IN 18CFR4.39 & 18CFR4.41 TO THE GEOGRAPHIC LOCATION. THIS EXHIBIT IS BASED UPON MAPS OF THE EXHIBIT "K," SHEET 25 OF THE MIDDLE FORK AMERICAN RIVER PROJECT NO.2079, AND BOOK 2 SURVEY NO. 2079, RECORDS OF THE PLACER COUNTY AND CORRECTED SHOW THEREON. SEE CONTROL SCHEME FOR DETAILS OF THE BOUNDARY DELINEATION AND DATA ACQUISITION.

ANDREGG GEOMATICS



DENNIS G. McVEY, LS 4751  
LICENSE EXPIRES: 9/30/11  
DATE

NOTES

ALL FACILITIES AND FEATURES SHOWN HERE ON ARE PER DATA COLLECTED BY OTHERS.

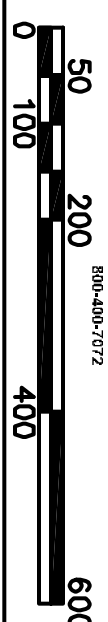
REFERENCE POINT COORDINATES

NAD83 CALIFORNIA STATE PLANE COORDINATE SYSTEM ZONE II (CCS83, ZONE 2); U.S. SURVEY FEET

EXHIBIT 'G' PROJECT 2079

MIDDLE FORK AMERICAN RIVER PROJECT  
NORTH FORK LONG CANYON CROSSING  
A PORTION OF SECTIONS 23 T.13 N., R.13 E.  
AND SECTIONS 27 & 34, T.14 N., R.13 E., M.D.M.  
PLACER COUNTY, CALIFORNIA  
SCALE: 1"=200' FEBRUARY 11, 2011

ANDREGG  
GEOMATICS



SHEET 21 OF 33